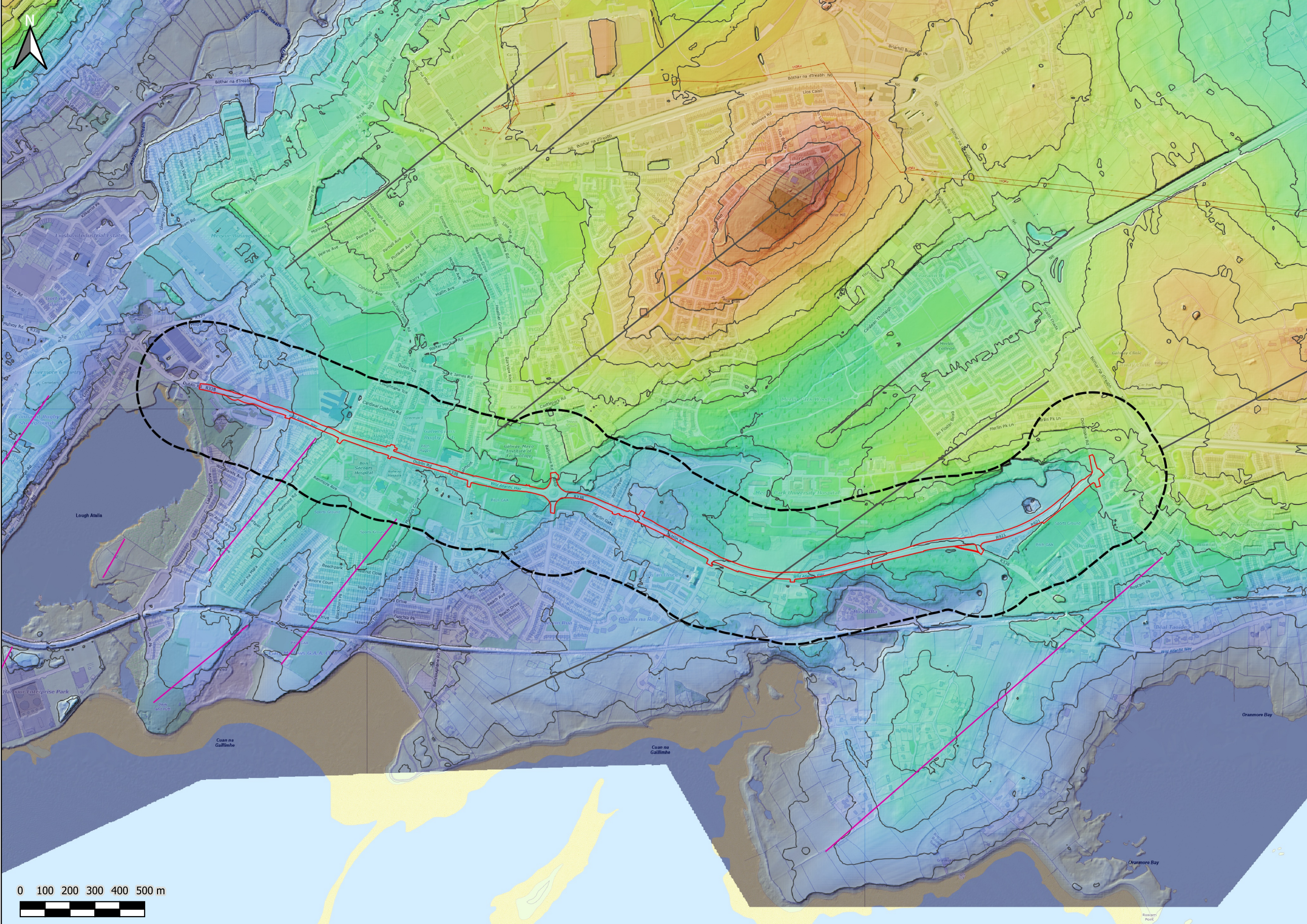


F4B

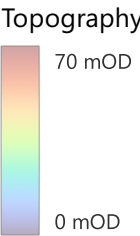
Topography and Geomorphology



Legend

- Proposed Scheme
- Site Boundary
- Study Area (250m)

- Geomorphology
- Drumlin
 - Streamlined Bedrock





NTA
Údaráis Náisiúnta Iompair
National Transport Authority



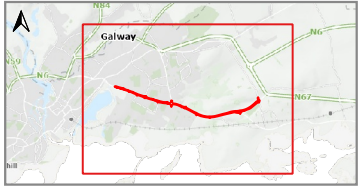
BUS
CONNECTS
GALWAY
SUSTAINABLE TRANSPORT FOR A BETTER CITY



Project
Ireland 2040
Building Ireland's
Future


© National Roads Authority (NRA) 2024. This drawing is confidential and the copyright in it is owned by NRA. This drawing must not be either loaned, copied or otherwise reproduced in whole or in part or used for any purpose without the prior permission of NRA. Transport Infrastructure Ireland (TII) is an operational name of the National Roads Authority. Division of Tailte Éireann CYAL50419116. All elevations are in metres and relate to Geoid Model (OSGM02) Malin Head as defined by existing Project Control. All Co-ordinates are in Irish Transverse Mercator Grid (ITM) as defined by VRS active GNSS station Tallaght College (TLLG).

Key Plan



Client:

Galway City Council




Project:


BusConnects Galway
Dublin Road

Drawn:	CH	Date:	31.10.2024
Checked:	EL	Scale:	1:15000
Approved:	MJC	Sheet:	A3

Consultant:



Barry Transportation
Unit 14C, N5 Business Park,
Moneen Rd,
Castlebar, Co. Mayo,
F23 Y339



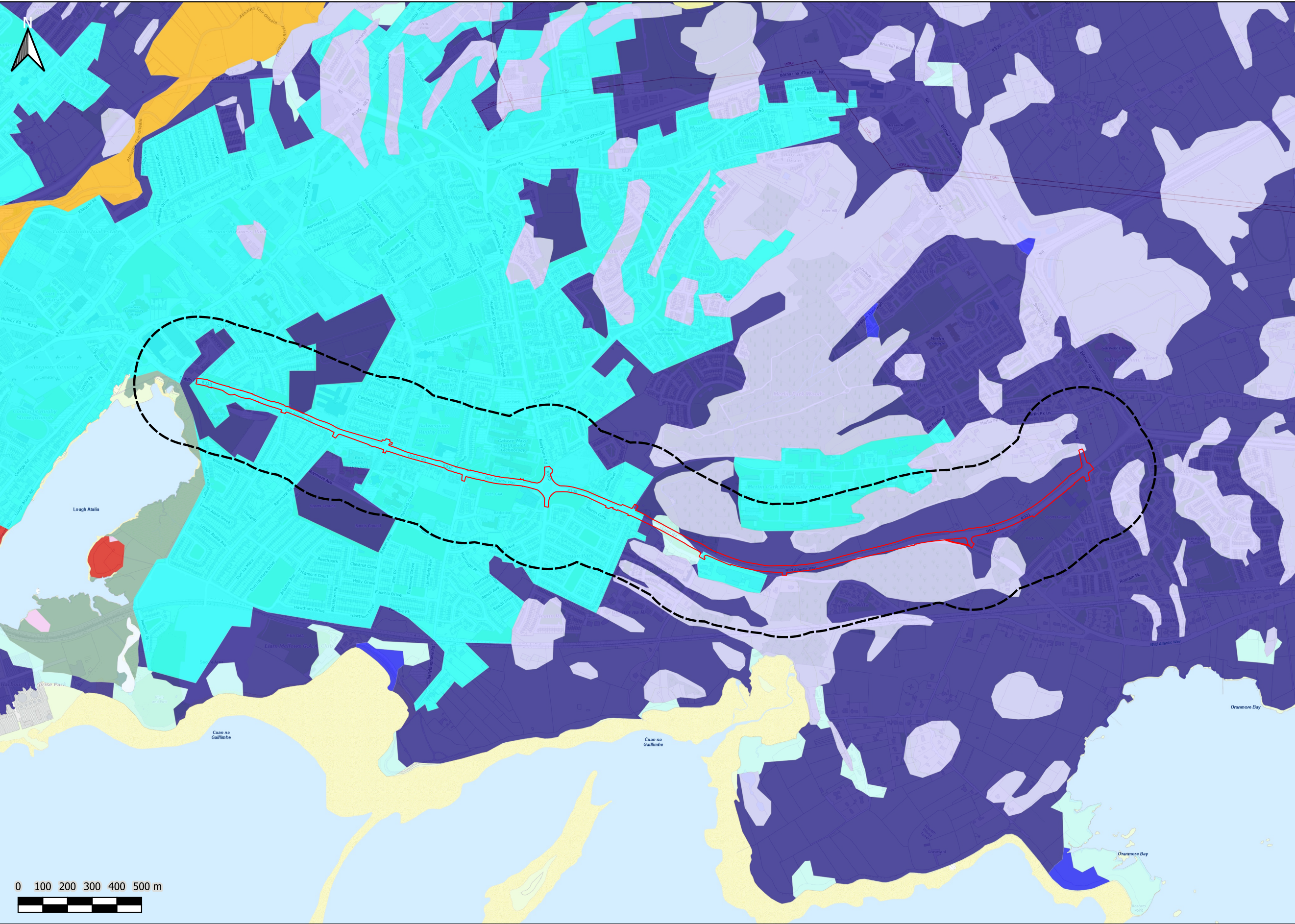
Map Figure Title:

Map Figure 14.1 Topography
& Geomorphology

Status:	S3	Rev:	P01	Sheet:	1 of 1
---------	----	------	-----	--------	--------

Map Figure No.:
BCGDR-BTL-XX-XX-DR-CG-06049_Map_Figure
_14.1_Topography_& Geomorphology

F4EG
Teagasc Soils

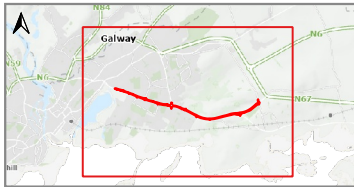


- Legend**
- Proposed Scheme
 - Site Boundary
 - Study Area (250m)
- Teagasc Soils**
- AminDW
 - AminSRPT
 - BminDW
 - BminPD
 - BminPDPT
 - BminSW
 - BminSRPT
 - AlluvMIN
 - Lac
 - MarSed
 - Made
 - Water



© National Roads Authority (NRA) 2024. This drawing is confidential and the copyright in it is owned by NRA. This drawing must not be either loaned, copied or otherwise reproduced in whole or in part or used for any purpose without the prior permission of NRA. Transport Infrastructure Ireland (TII) is an operational name of the National Roads Authority. Division of Tailte Éireann CYAL50419116. All elevations are in metres and relate to Geoid Model (OSGM02) Malin Head as defined by existing Project Control. All Co-ordinates are in Irish Transverse Mercator Grid (ITM) as defined by VRS active GNSS station Tallaght College (TLLG).

Key Plan



Client:
Galway City Council



Project:
**BusConnects Galway
Dublin Road**

Drawn: CH Date: 31.10.2024
Checked: EL Scale: 1:15000
Approved: MJC Sheet: A3

Consultant:



Map Figure Title:

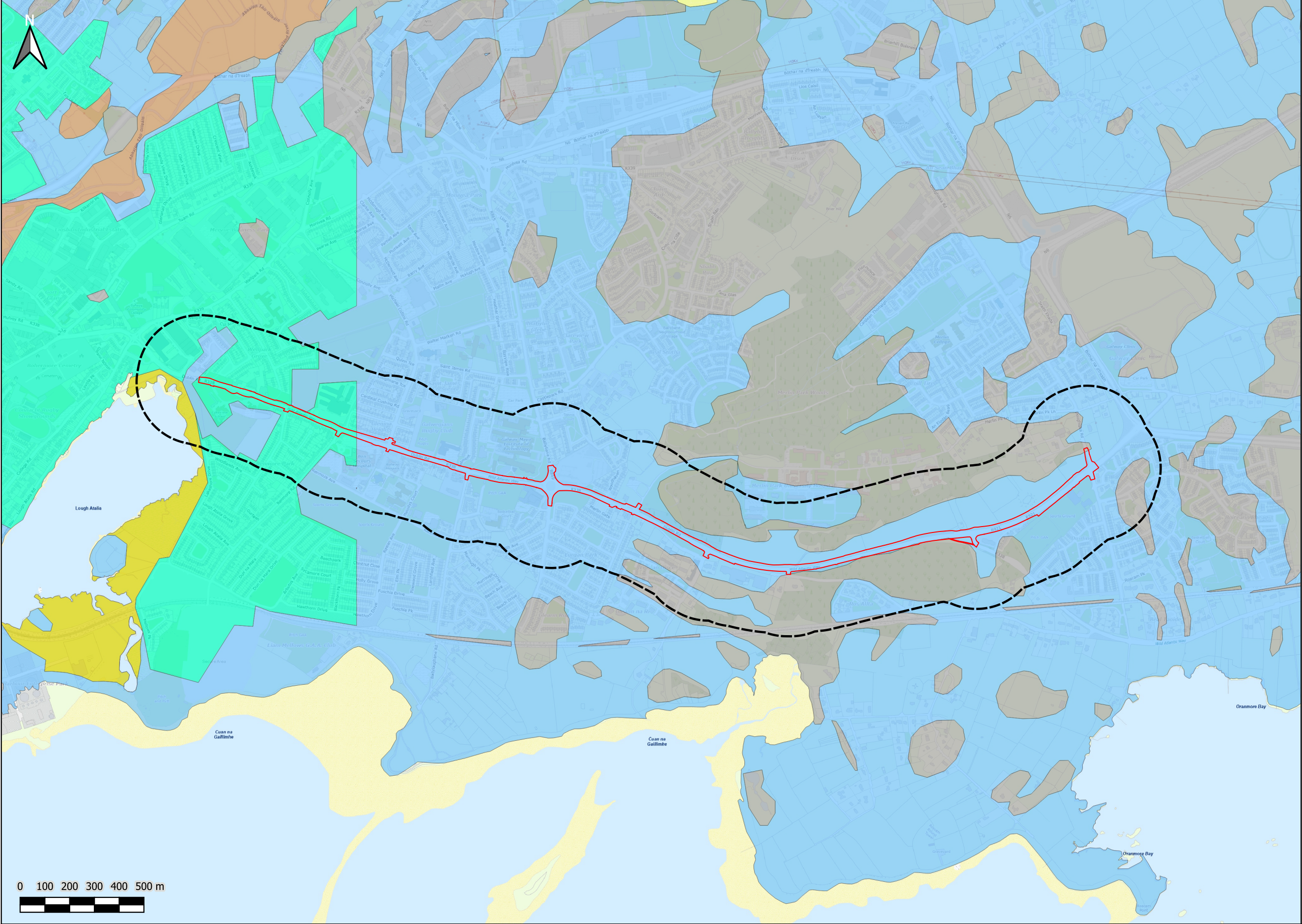
**Map Figure 14.2 Teagasc
Soils**

Status: S3 Rev: P01 Sheet: 1 of 1

Map Figure No.:
BCGDR-BTL-XX-XX-DR-CG-06050_Map_Figure
_14.2_Teagasc_Soils

FI B

Quaternary Geology



Legend

Proposed Scheme

Site Boundary

Study Area (250m)

Quaternary Geology

Cut over raised peat

Fen Peat

Kartsified bedrock outcrop or subcrop

Lacustrine sediments

Esturine silts and clays

Bedrock outcrop or subcrop

Till derived from limestones

Urban

Water

NTA

Údarás Náisiúnta Iompair

National Transport Authority

BUS CONNECTS GALWAY

SUSTAINABLE TRANSPORT FOR A BETTER CITY

Project Ireland 2040

Building Ireland's Future

© National Roads Authority (NRA) 2024. This drawing is confidential and the copyright in it is owned by NRA. This drawing must not be either loaned, copied or otherwise reproduced in whole or in part or used for any purpose without the prior permission of NRA. Transport Infrastructure Ireland (TII) is an operational name of the National Roads Authority. Division of Tailte Éireann CYAL50419116. All elevations are in metres and relate to Geoid Model (OSGM02) Malin Head as defined by existing Project Control. All Co-ordinates are in Irish Transverse Mercator Grid (ITM) as defined by VRS active GNSS station Tallaght College (TLLG).

Key Plan

Client:

Galway City Council

Project:

BusConnects Galway Dublin Road

Drawn: CH

Checked: EL

Approved: MJC

Date: 31.10.2024

Scale: 1:15000

Sheet: A3

Consultant:

BARRY

TRANSPORTATION

egis

GROUP

Barry Transportation
Unit 14C, N5 Business Park,
Moneen Rd,
Castlebar, Co. Mayo,
F23 Y339

Map Figure Title:

Map Figure 14.3 Quaternary Geology

Status: S3

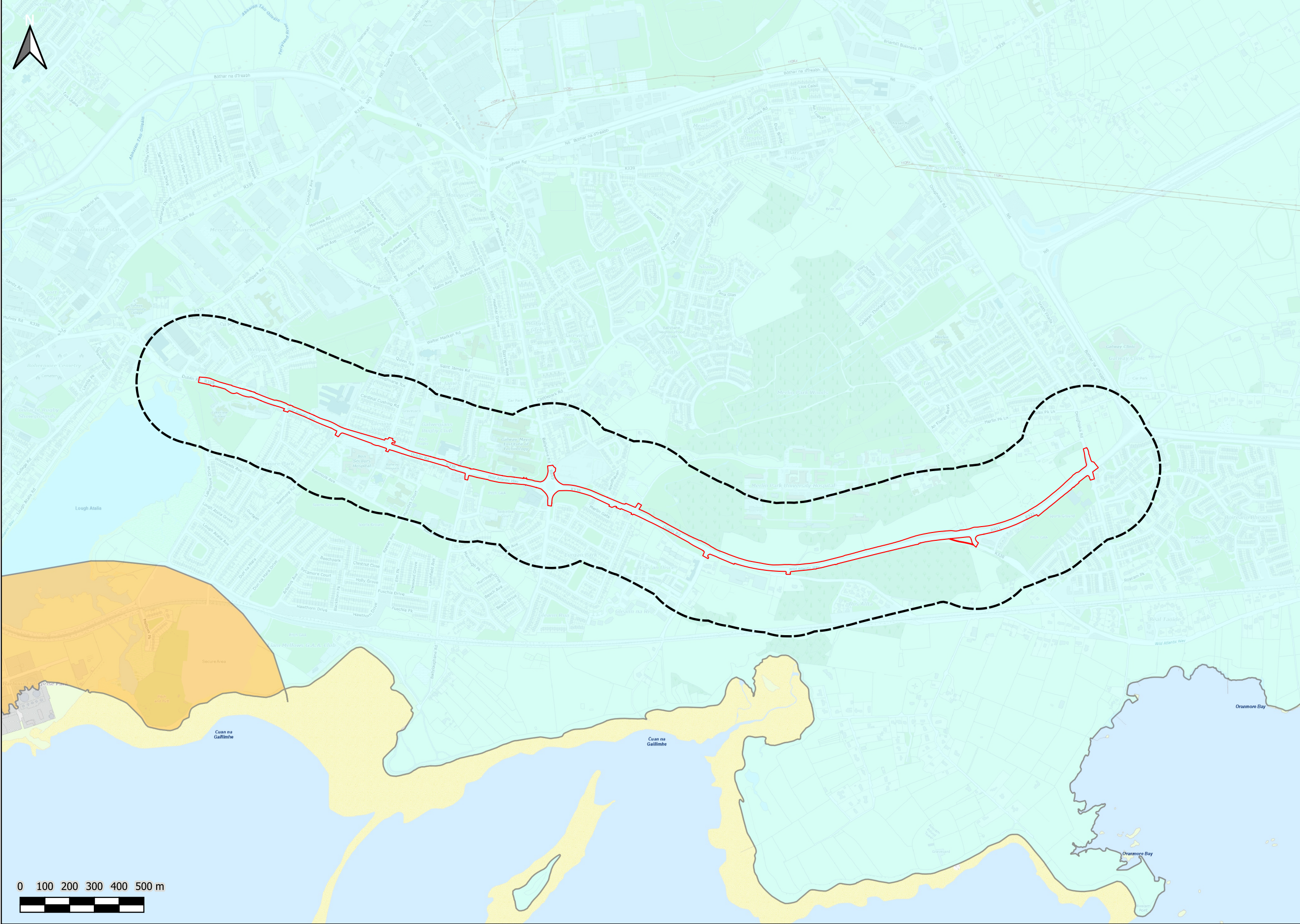
Rev: P01

Sheet: 1 of 1

Map Figure No.:
BCGDR-BTL-XX-XX-DR-CG-06051_Map_Figure
_14.3_Quaternary_Geology

FI ¼

Bedrock Geology



Legend

Proposed Scheme

Site Boundary

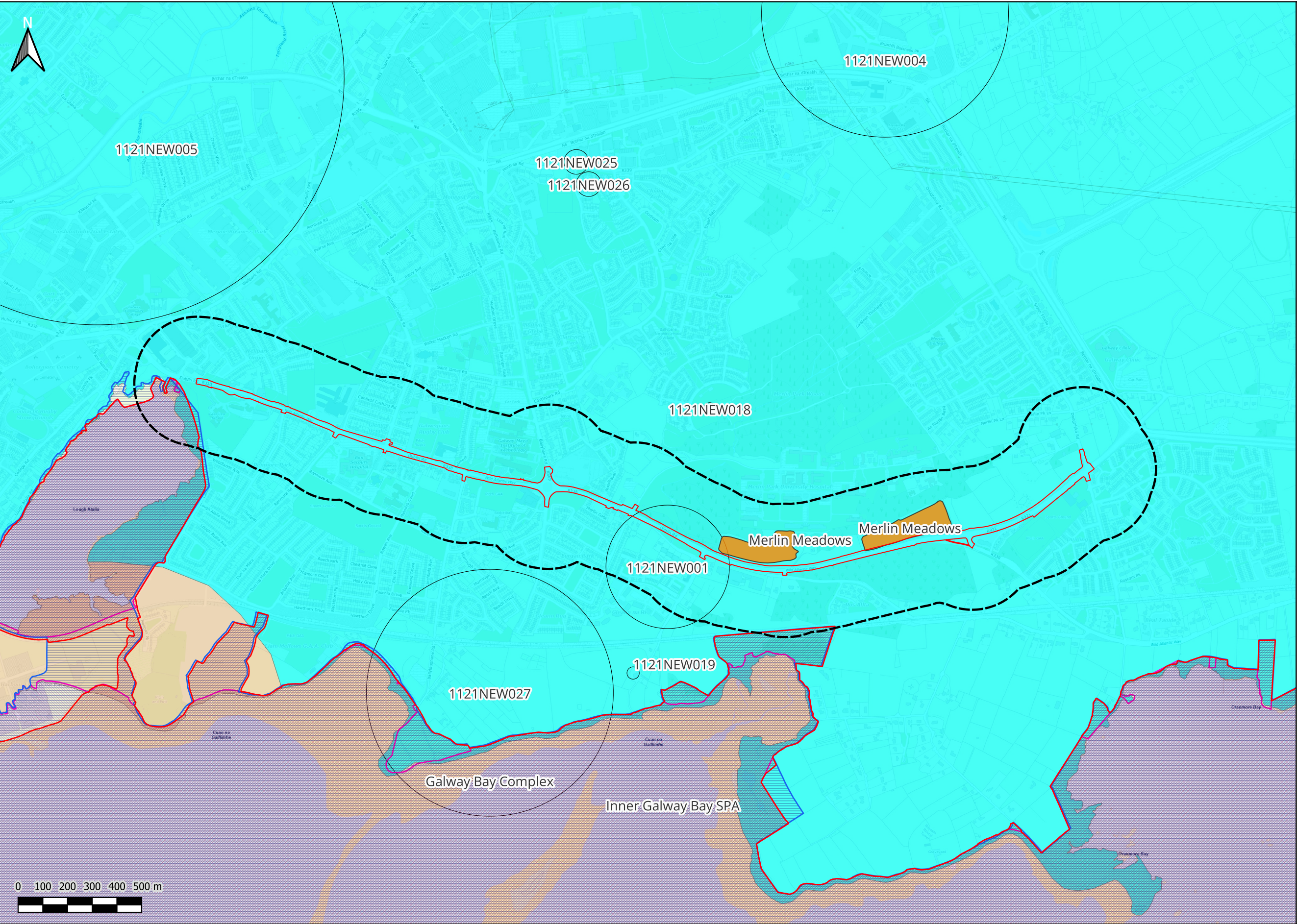
Study Area (250m)

Bedrock Geology

Burren Formation

Metagabbro & orthogneiss suite

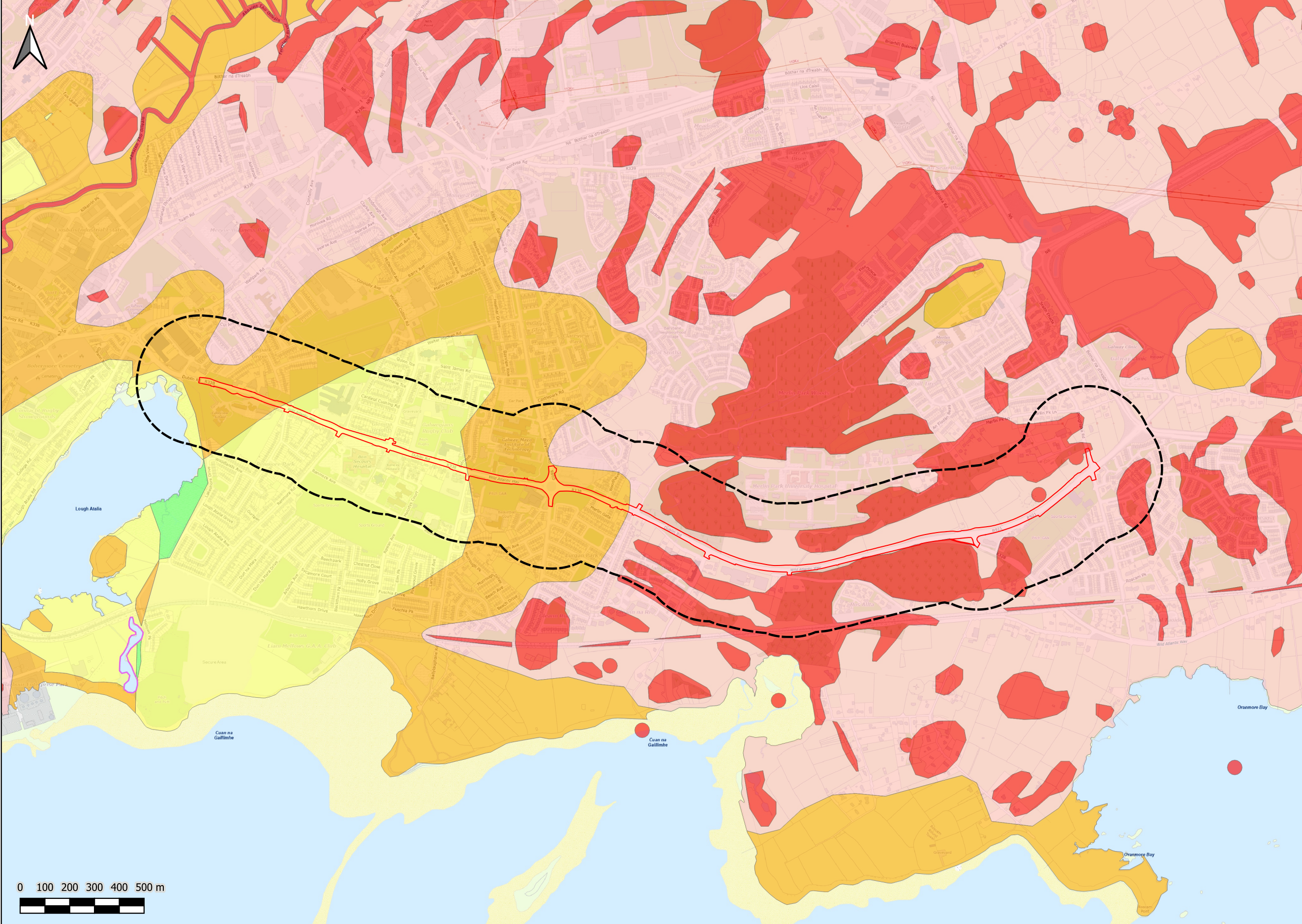
FI È
Ó^å![] & Áquifers



- Legend**
- Proposed Scheme Site Boundary
 - Study Area (250m)
 - Designated Sites**
 - Merlin Meadows
 - Special Area of Conservation
 - Special Protection Area
 - Proposed Natural Heritage Area
 - Groundwater Abstraction**
 - Groundwater Wells and Springs
 - Bedrock Aquifers**
 - Regionally Important Aquifer - Karstified (conduit)
 - Poor Aquifer - Bedrock which is Generally Unproductive except for Local Zones

FI 16

Groundwater Vulnerability



- Legend
- Proposed Scheme

Site Boundary

Study Area (250m)
- Groundwater Vulnerability
- Rock at or near Surface or Karst

Extreme

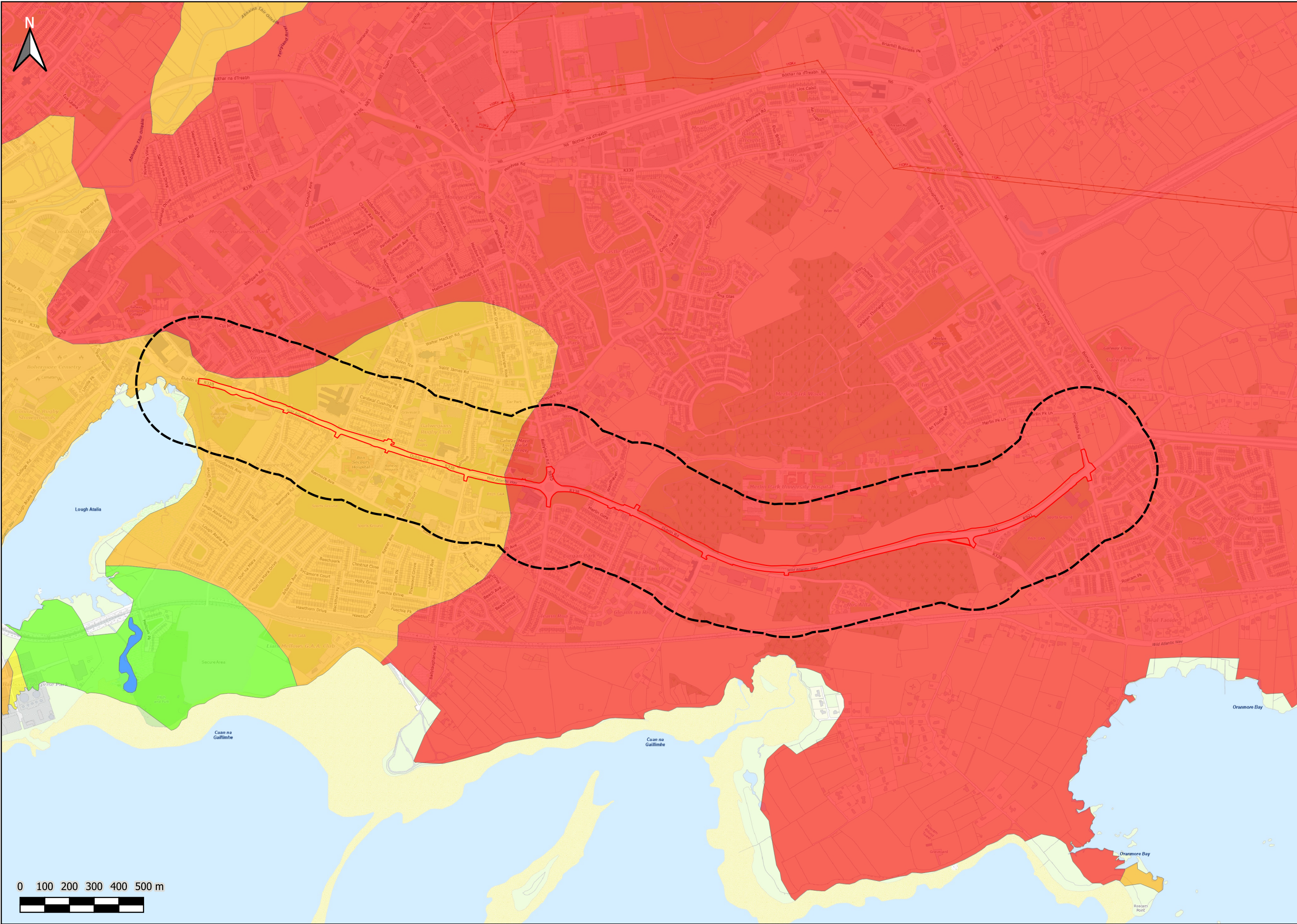
High

Moderate

Low

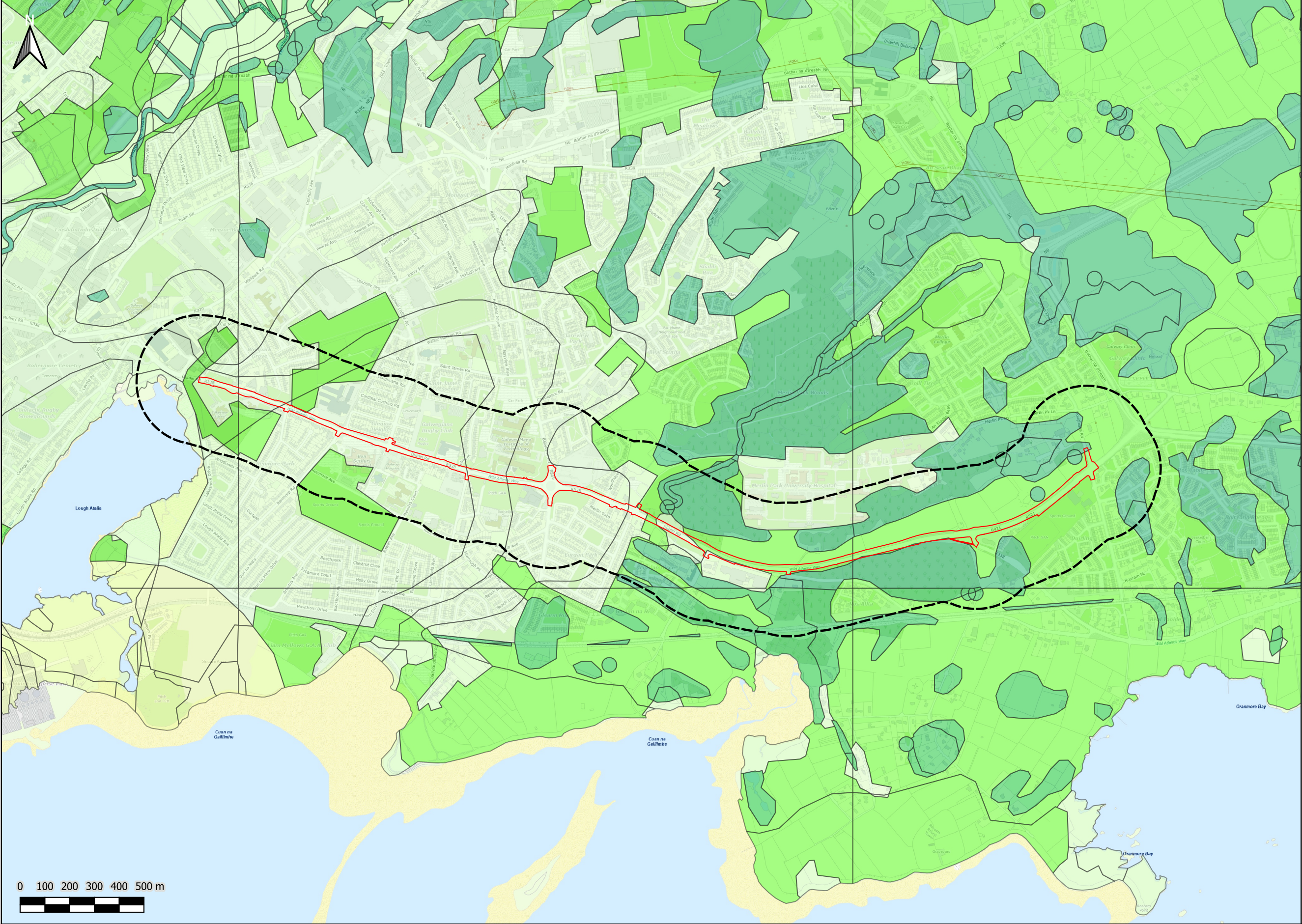
Water

FI ٤٧
Aggregate Potential



- Legend**
- Proposed Scheme
 - Site Boundary
 - Study Area (250m)
- Aggregate Potential**
- Very High potential
 - High potential
 - Moderate potential
 - Low potential
 - Very Low potential

FI B
Groundwater Recharge



Legend

Proposed Scheme

Site Boundary

Study Area (250m)

Groundwater Recharge

601-700

551-600

451-500

401-450

151-200

101-150

51-100

NTA

Údarás Náisiúnta Iompair

National Transport Authority

BUS CONNECTS GALWAY

SUSTAINABLE TRANSPORT FOR A BETTER CITY

Project Ireland 2040

Building Ireland's Future

© National Roads Authority (NRA) 2024. This drawing is confidential and the copyright in it is owned by NRA. This drawing must not be either loaned, copied or otherwise reproduced in whole or in part or used for any purpose without the prior permission of NRA. Transport Infrastructure Ireland (TII) is an operational name of the National Roads Authority. Division of Tailte Éireann CYAL50419116. All elevations are in metres and relate to Geoid Model (OSGM02) Malin Head as defined by existing Project Control. All Co-ordinates are in Irish Transverse Mercator Grid (ITM) as defined by VRS active GNSS station Tallaght College (TLLG).

Key Plan

Client:

Galway City Council

Project:

BusConnects Galway Dublin Road

Drawn: CH

Checked: EL

Approved: MJC

Date: 31.10.2024

Scale: 1:15000

Sheet: A3

Consultant:

BARRY

TRANSPORTATION

Barry Transportation
Unit 14C, N5 Business Park,
Moneen Rd,
Castlebar, Co. Mayo,
F23 Y339

Map Figure Title:

Map Figure 14.8
Groundwater Recharge

Status: S3

Rev: P01

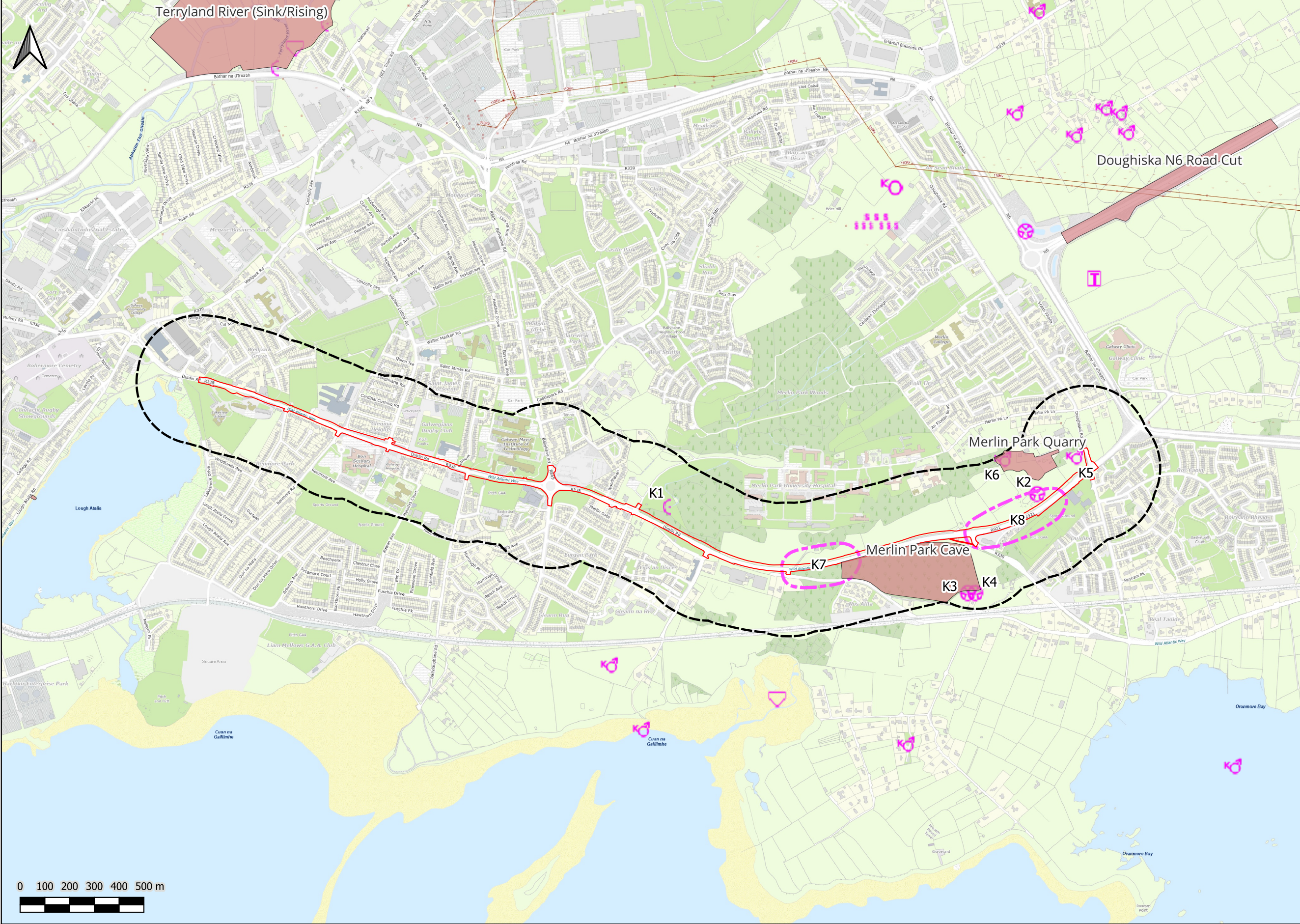
Sheet: 1 of 1

Map Figure No.:
BCGDR-BTL-XX-DR-CG-06056_Map_Figure
_14.8.Groundwater_Recharge



FI 19

Karst Features and Geoheritage
Sites



- Legend
- Proposed Scheme
- Site Boundary
- Study Area (250m)
- Geoheritage Areas
- County Geological Site
- Karst Features
- Geophysics
- Identified Karst Features
- Karst Features
- Borehole
- Cave
- Enclosed Depression
- Spring
- Superficial Solution Feature
- Swallow Hole
- Turlough

NTA

Údarás Náisiúnta Iompair

National Transport Authority

BUS CONNECTS GALWAY

SUSTAINABLE TRANSPORT FOR A BETTER CITY

Project Ireland 2040

Building Ireland's Future

© National Roads Authority (NRA) 2024. This drawing is confidential and the copyright in it is owned by NRA. This drawing must not be either loaned, copied or otherwise reproduced in whole or in part or used for any purpose without the prior permission of NRA. Transport Infrastructure Ireland (TII) is an operational name of the National Roads Authority. Division of Taite Éireann CYAL50419116. All elevations are in metres and relate to Geoid Model (OSGM02) Malin Head as defined by existing Project Control. All Co-ordinates are in Irish Transverse Mercator Grid (ITM) as defined by VRS active GNSS station Tallaght College (TLLG).

Key Plan

Client:

Galway City Council

Project:

BusConnects Galway Dublin Road

Drawn: CH

Checked: EL

Approved: MJC

Date: 31.10.2024

Scale: 1:15000

Sheet: A3

Consultant:

BARRY

TRANSPORTATION

egis

GROUP

Barry Transportation
Unit 14C, N5 Business Park,
Moneen Rd,
Castlebar, Co. Mayo,
F23 Y339

Map Figure Title:

Map Figure 14.9 Karst Features & Geoheritage Sites

Status: S3

Rev: P01

Sheet: 1 of 1

Map Figure No.:
BCGDR-BTL-XX-DR-CG-06057_Map_Figure
_14.9_Karst_Features_& Geoheritage_Sites